



MANAGING WITH THE CONTROL PANEL

**Reference :Microsoft Windows Operating
System Essentials -Tom Carpenter**

The Control Panel



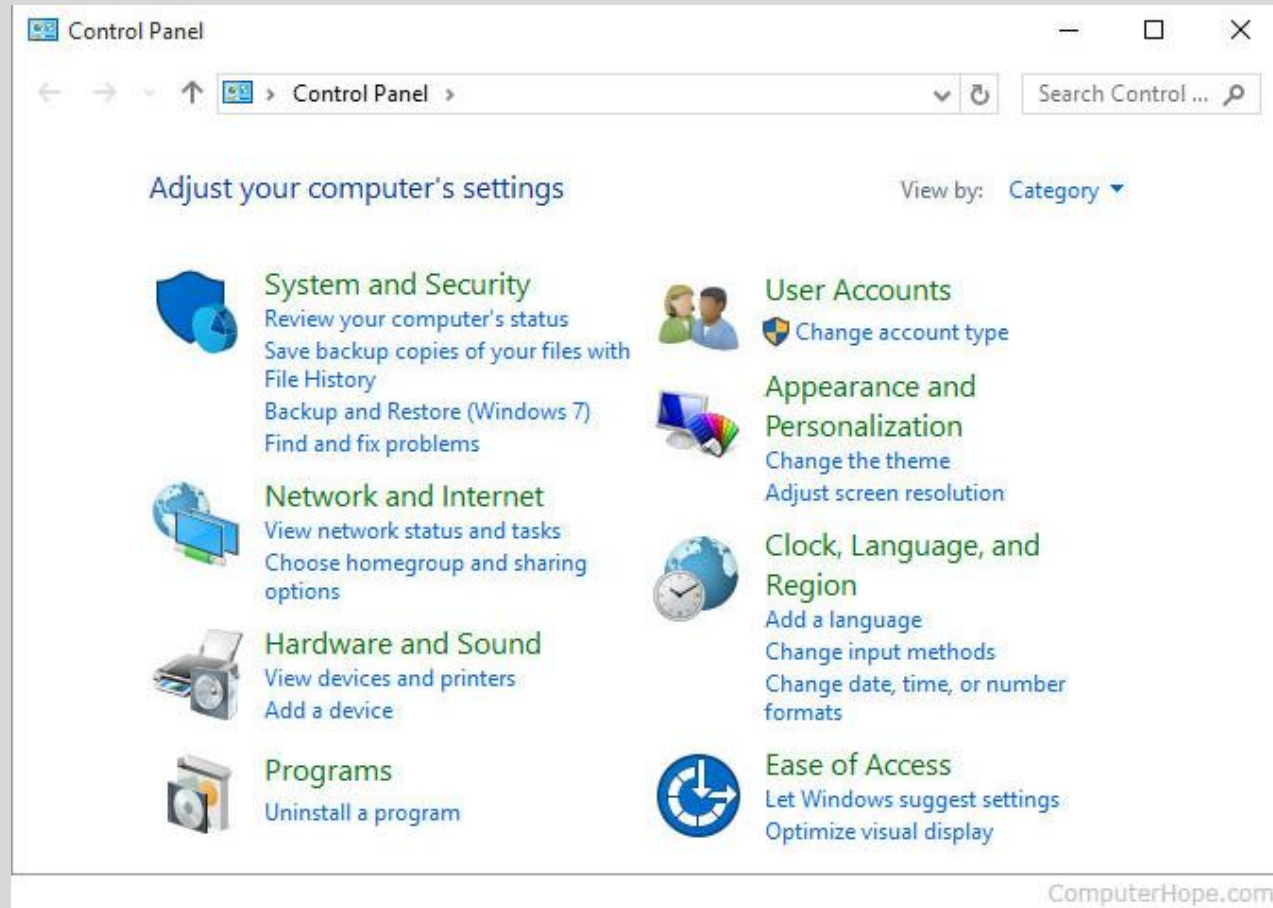
**HUB OF CONFIGURATION
AND ADMINISTRATION FOR
WINDOWS**



**CONSIST OF COMPONENTS
CALLED APPLETS**



**PROVIDES AN
ORGANIZATIONAL
STRUCTURE TO THE APPLETS**



Windows Control Panel

Control Panel Applet

- Control Panel provide access to applets.
- A Control Panel *applet* is a special Windows application that is used to configure some aspect of the system and add-on applications.
- Windows 7 has more than 40 Control Panel applets.
- Modern Control Panel consist of traditional applets and newer executable programs.
- Applets have a **.CPL** extension and executables have an **.EXE** extension.
- Windows 7 ships with at least 20 of these CPL files

```
Command Prompt
C:\Windows\System32>dir *.cpl
Volume in drive C is OS
Volume Serial Number is FA90-A034

Directory of C:\Windows\System32

04/16/2020  03:45 PM                555,008 appwiz.cpl
07/16/2020  02:14 PM                261,632 bthprops.cpl
03/19/2019  10:15 AM                193,024 desk.cpl
03/19/2019  10:15 AM                 7,168 Firewall.cpl
03/19/2019  10:15 AM               382,464 hdwwiz.cpl
02/12/2018  08:21 PM                273,376 igfxCPL.cpl
03/04/2020  07:33 PM                500,736 inetcpl.cpl
03/19/2019  10:14 AM                208,384 intl.cpl
03/19/2019  10:15 AM                 35,840 irprops.cpl
03/19/2019  10:15 AM                98,304 joy.cpl
03/19/2019  10:15 AM               71,680 main.cpl
03/19/2019  10:14 AM                549,376 mmsys.cpl
03/19/2019  10:15 AM                102,912 ncpa.cpl
03/19/2019  10:15 AM                216,576 powercfg.cpl
02/05/2016  09:53 AM             2,894,968 RTSnMg64.cpl
03/19/2019  10:14 AM                136,704 sysdm.cpl
03/19/2019  10:15 AM                704,512 TabletPC.cpl
03/19/2019  10:15 AM                109,056 telephon.cpl
03/19/2019  10:13 AM                235,520 timedate.cpl
11/18/2019  03:37 AM                83,456 wscui.cpl
          20 File(s)              7,620,696 bytes
           0 Dir(s)             4,943,810,560 bytes free

C:\Windows\System32>
```

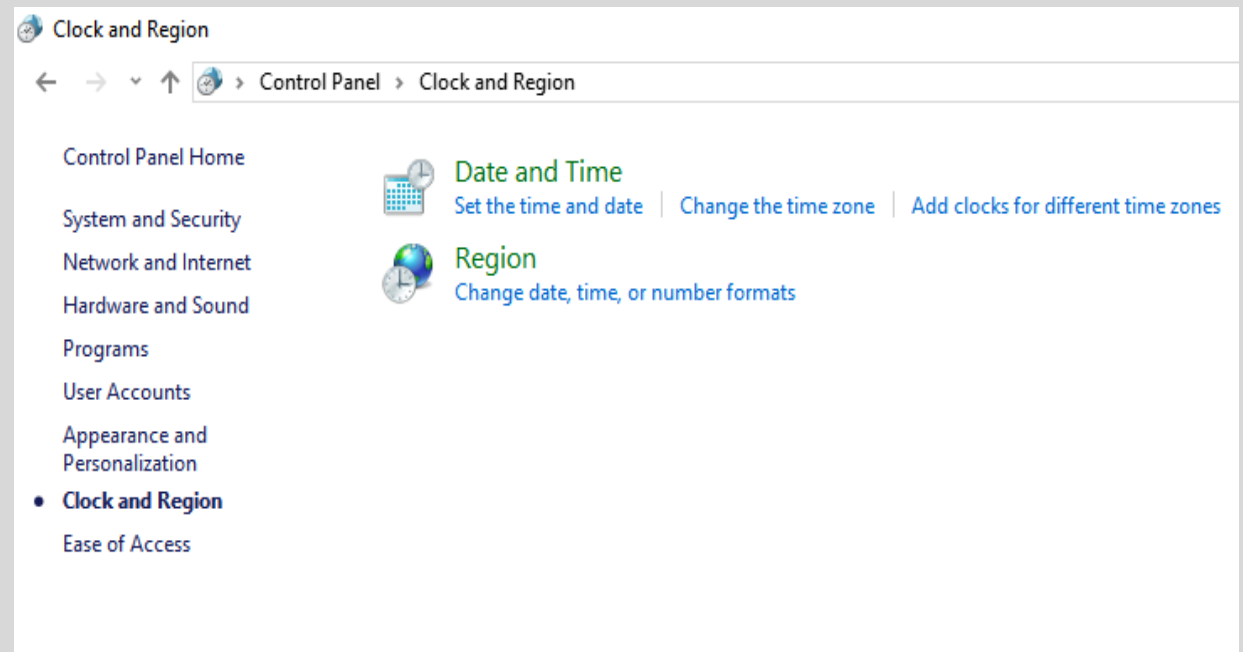
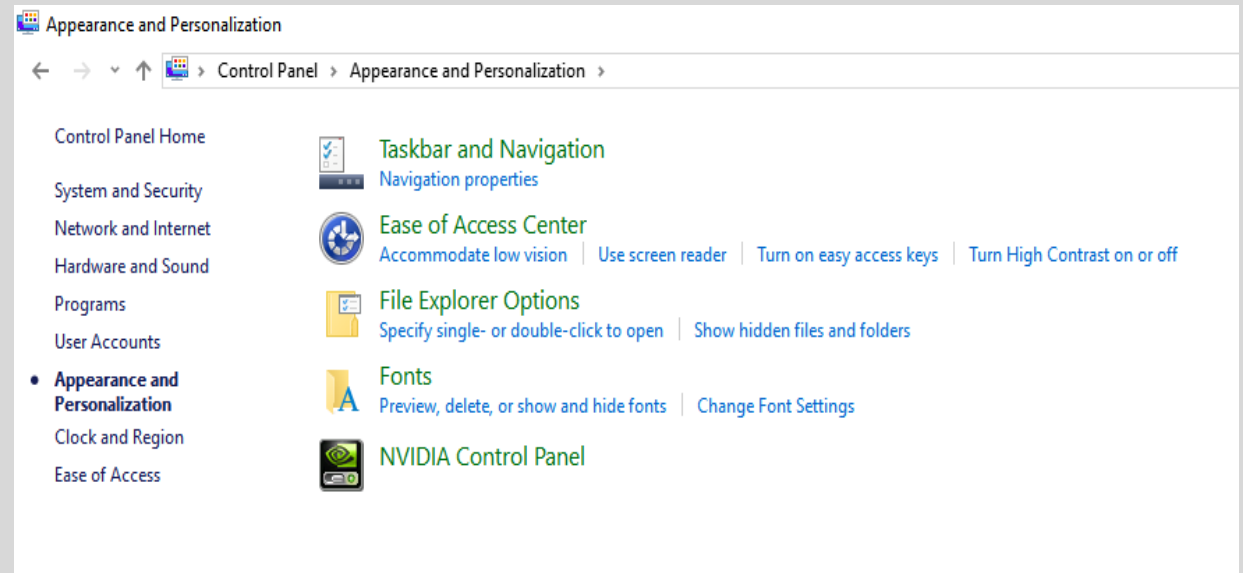
The directory listing of CPL files in the C:\Windows\System32 folder

Appearance and Personalization


- Provides capabilities to access Personalization, Display, Desktop Gadgets, Taskbar and Start Menu, Ease of Access Center, Folder Options and Fonts.
- Used for configuring the appearance of your screen.
- One can change system fonts used to display icon text and customize background theme.

Clock, Language, and Region

- This category includes ability to access the Date and Time as well as Region and Language options.
- The focus is on settings related to your local region. For example, the local time depends on the zone in which you are located.



Ease of Access

← → ▾ ↑  > Control Panel > Ease of Access >

Control Panel Home

System and Security

Network and Internet

Hardware and Sound

Programs

User Accounts

Appearance and
Personalization

Clock and Region

• **Ease of Access**



Ease of Access Center

[Let Windows suggest settings](#) | [Optimize visual display](#) | [Replace sounds with visual cues](#) |
[Change how your mouse works](#) | [Change how your keyboard works](#)



Speech Recognition

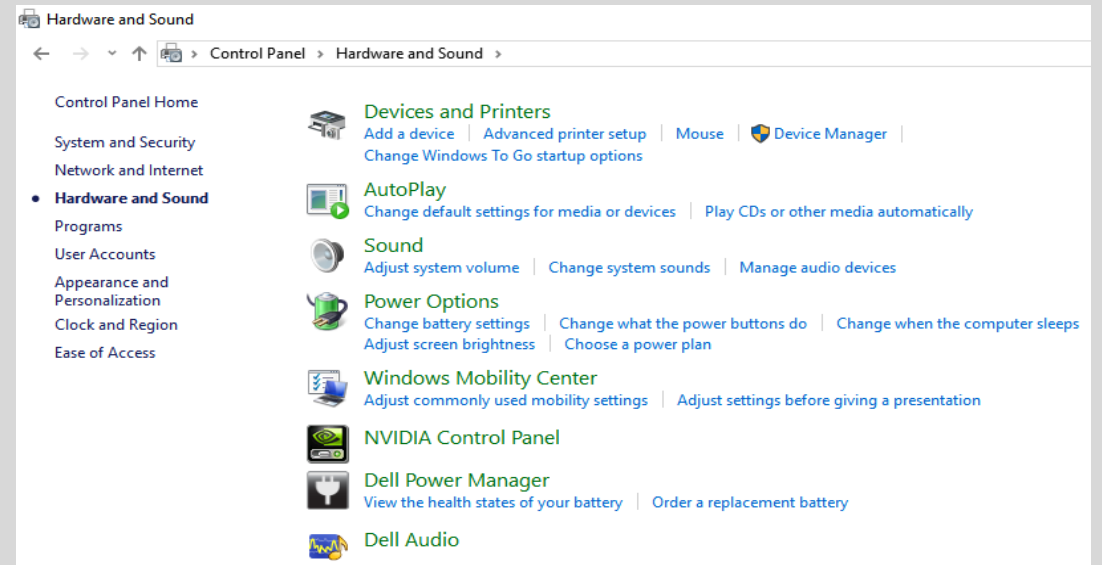
[Start speech recognition](#) | [Set up a microphone](#)

Ease of Access

- This category includes the ability to access the Ease of Access Center and Speech Recognition.
- The focus is on accessibility.
- One can configure speech recognition for OS commands
- Also launch the Narrator, which is a Windows 7 component that will read the text on the screen aloud to you.

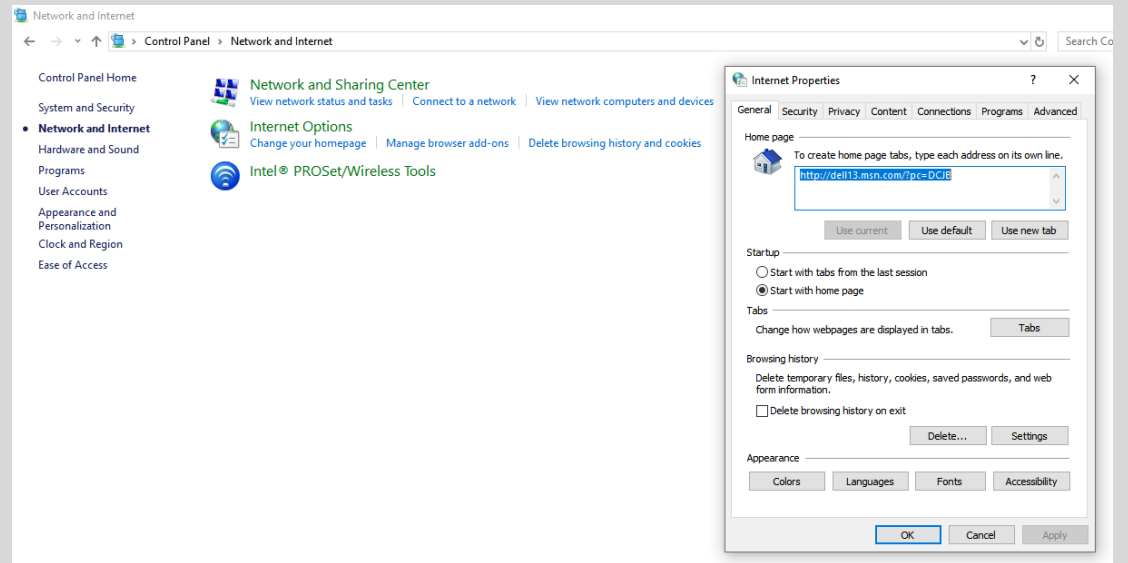
Hardware and Sound

- This provides options to access Devices and Printers, AutoPlay, Sound, Power Options, and Display.
- Emphasis is on the configuration and management of hardware and sound devices.
- E.g add and remove hardware, configure power management features of hardware installed.

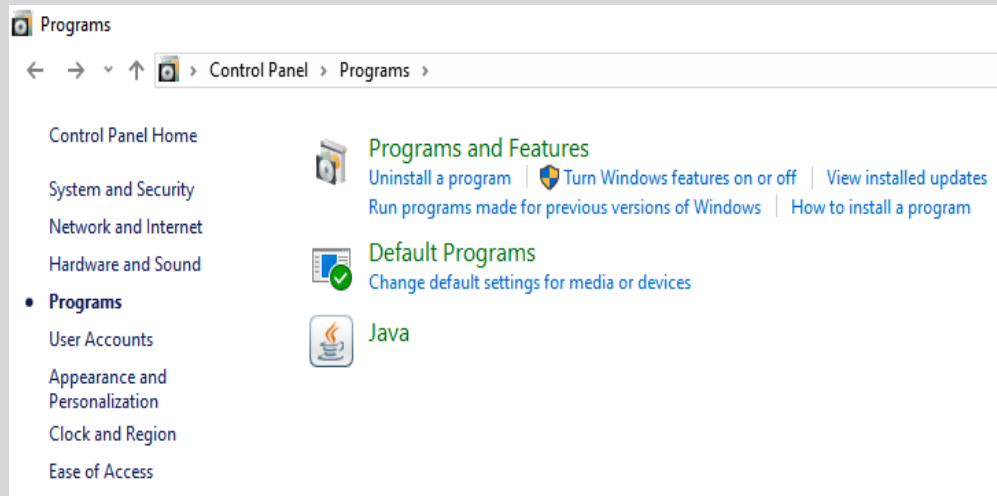


Network and Internet

- It is used to configure the Network and Sharing Center, the **HomeGroup** feature, and Internet Options.
- The focus of this category is on network connectivity.
- The Network and Sharing Center provides tools for network troubleshooting and configuration.
- Internet Options provides settings for configuring homepage and manage browser addons.

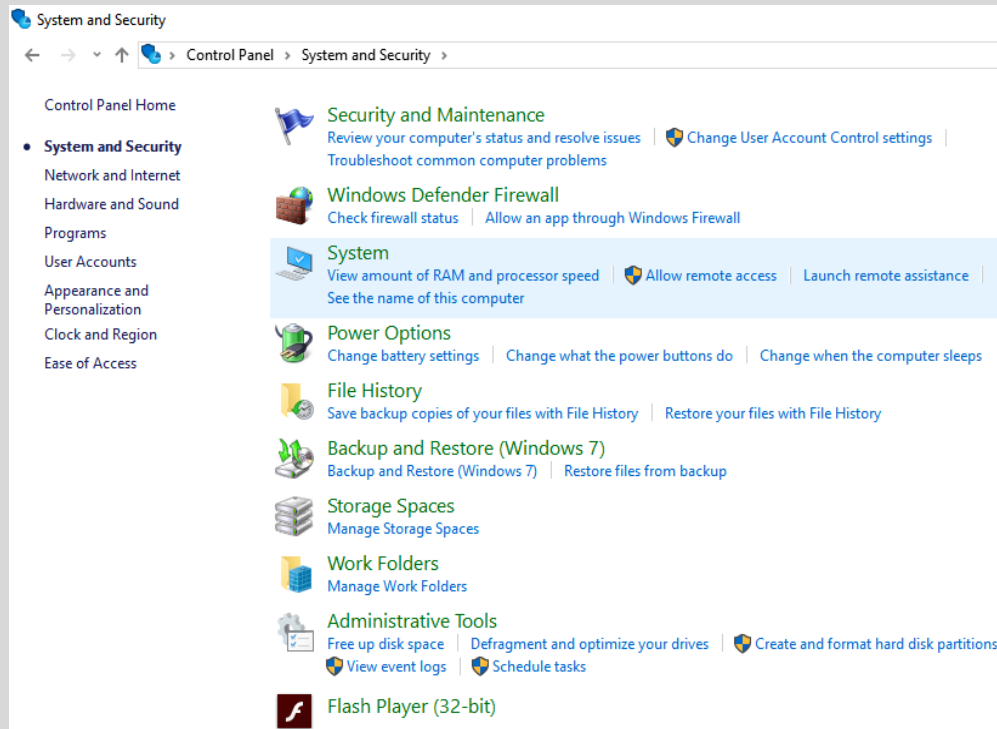


A homegroup is a collection of Windows 7 or later computers configured to automatically share their resources on the network with password protection.



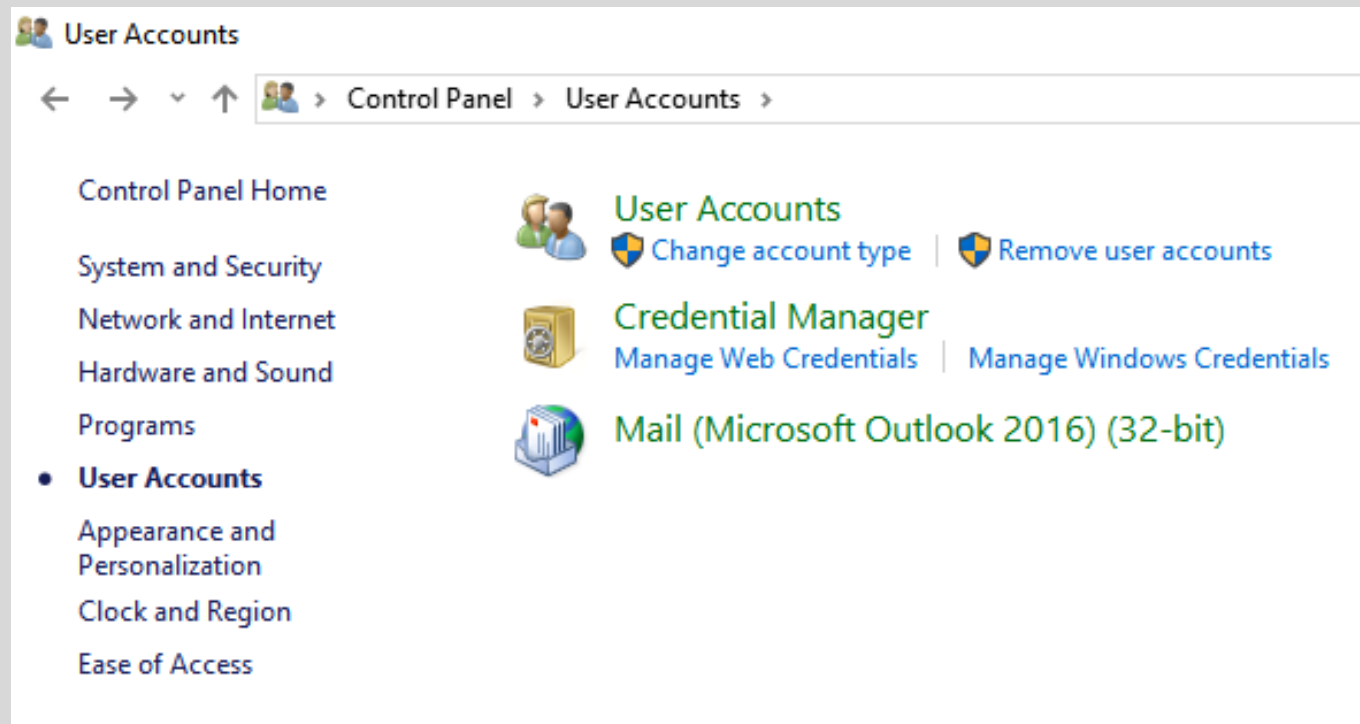
Programs

- Includes the ability to access Programs and Features, Default Programs.
- The focus is on application management.
- For example, the Programs and Features section of this category is used to add and remove applications.



System and Security

- Used to access the Action Center, Windows Firewall, System properties, Windows Update, Power Options, Backup and Restore, BitLocker Drive Encryption, and Administrative Tools.
- Provides tools to secure your system.



User Accounts

- This category includes the ability to access User Accounts and Credential Manager.
- Allows one to configure and manage user accounts, account credentials.
- Manage control of user account capabilities.