

# XEROPHYTES (*Nerium* leaf)

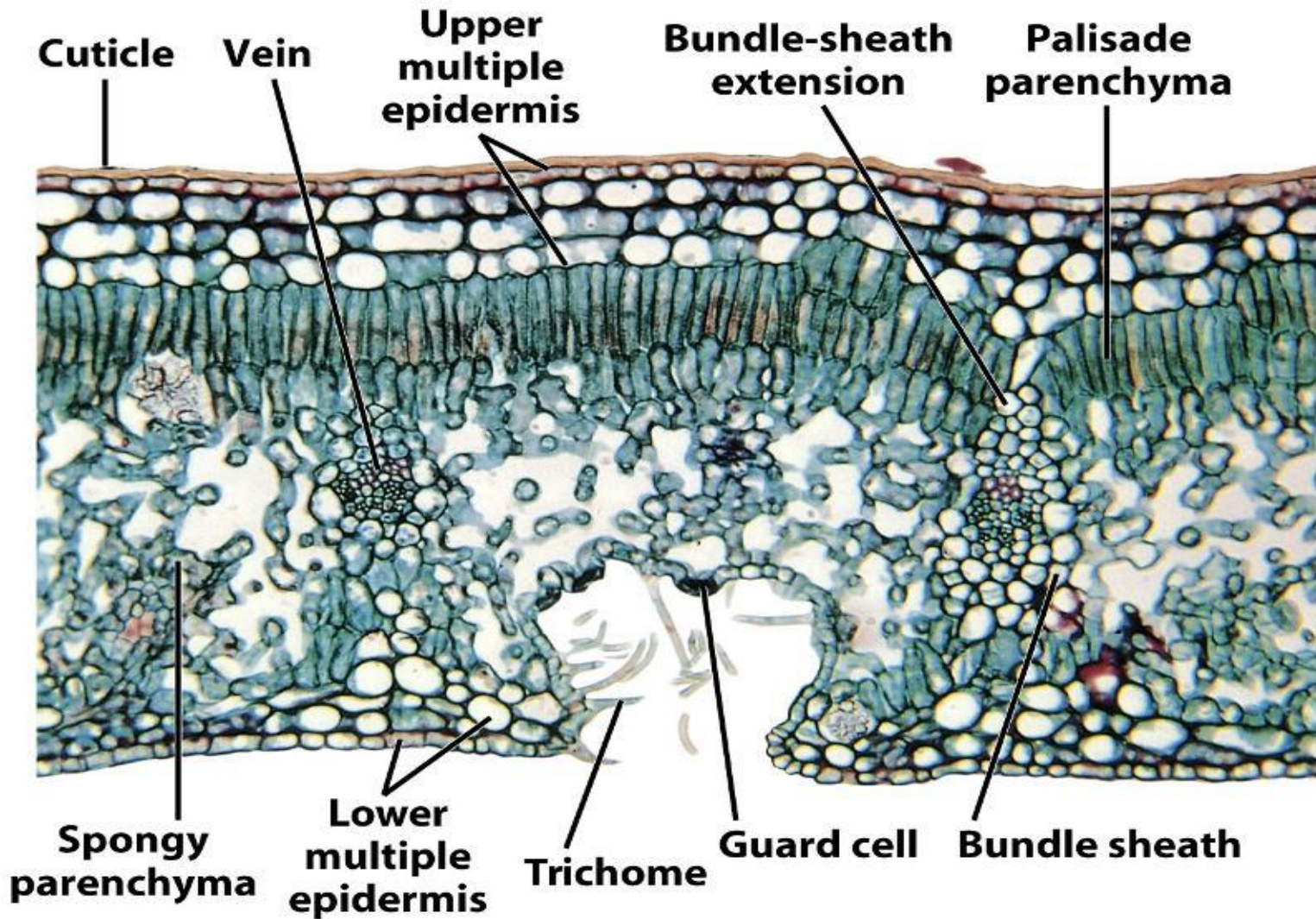
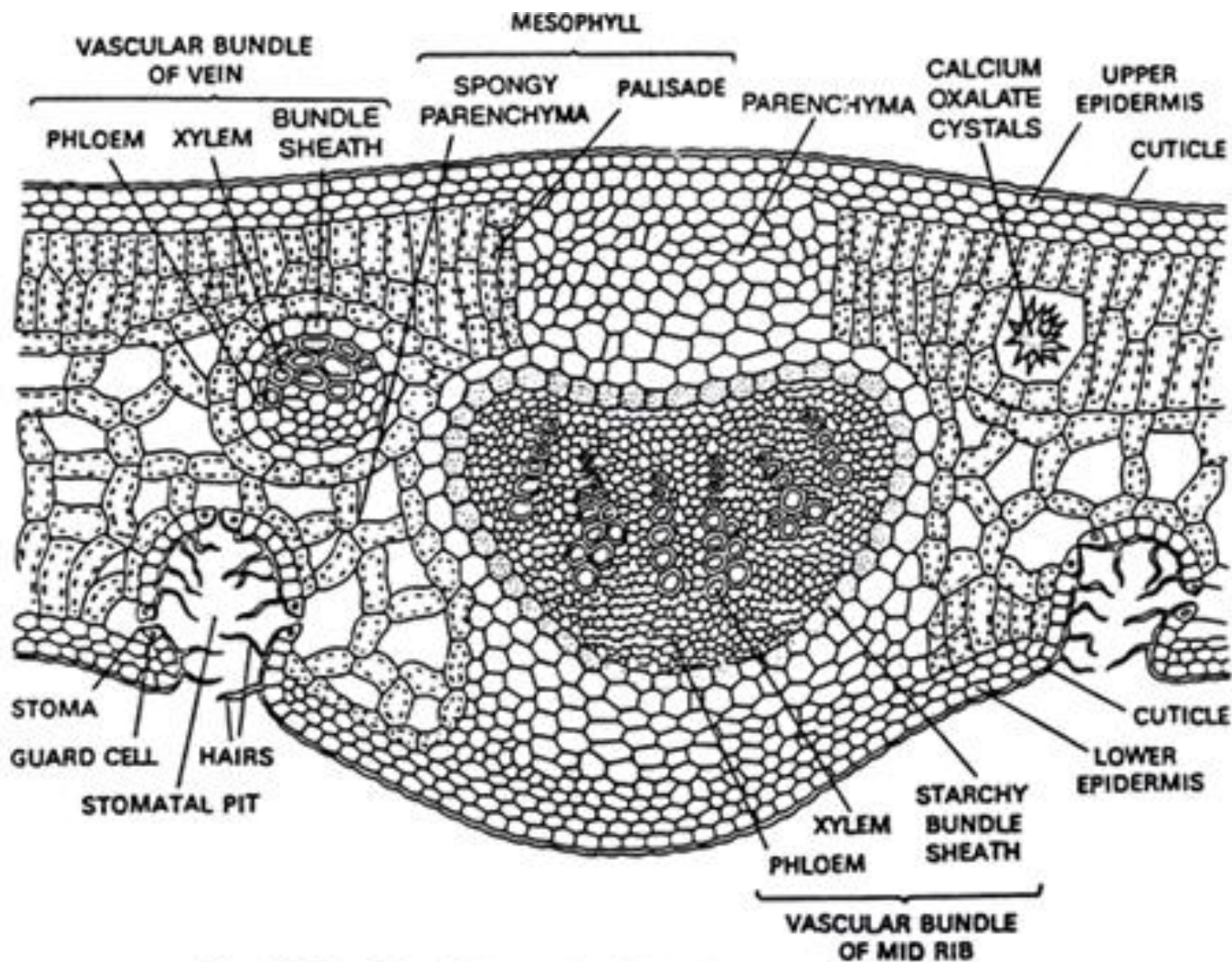
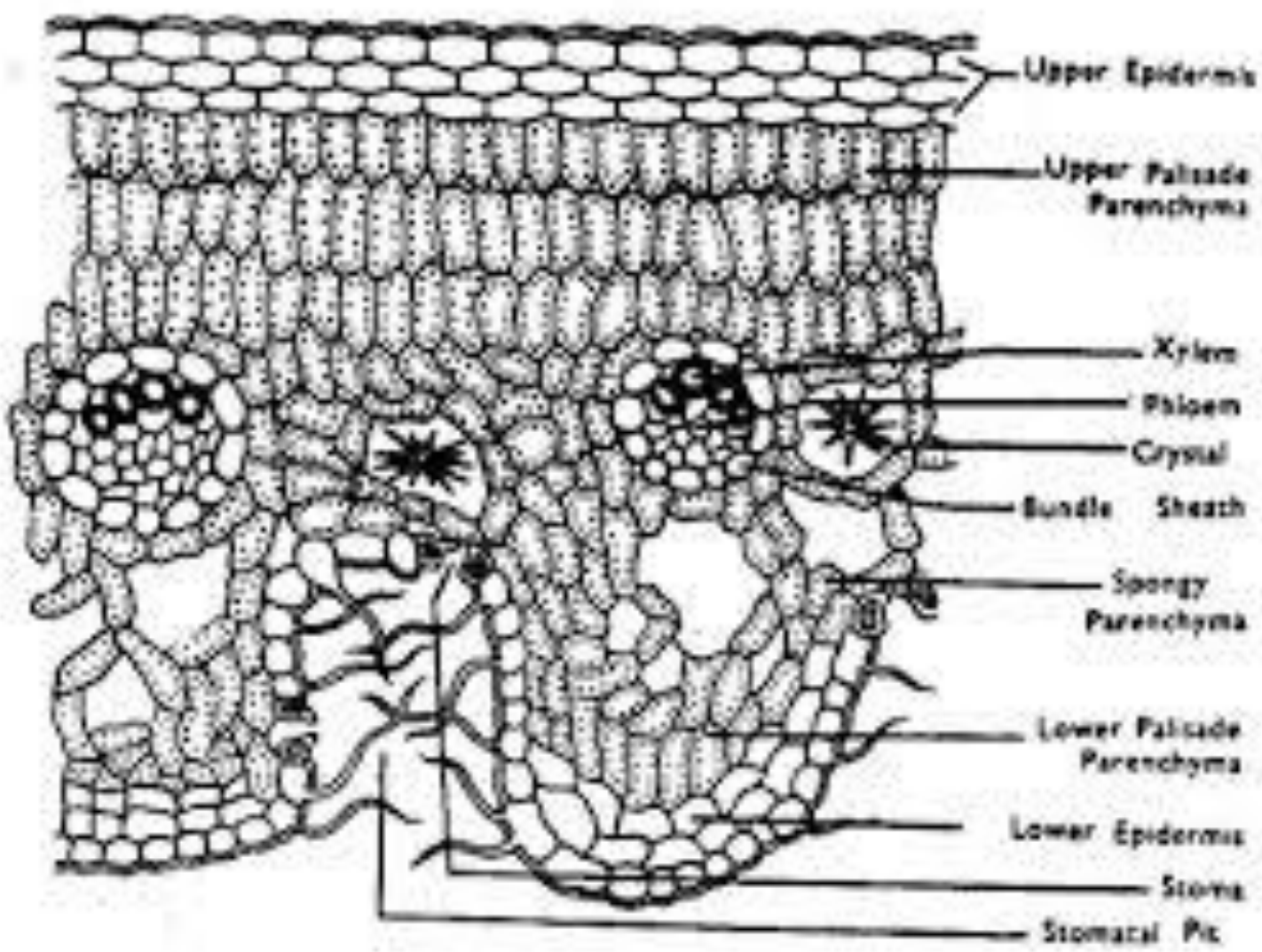


Figure 25-22  
*Biology of Plants, Seventh Edition*  
© 2005 W. H. Freeman and Company



**Fig. 10.12.** C.S. of *Nerium* leaf showing xerophytic characters.





# Pinus Needle

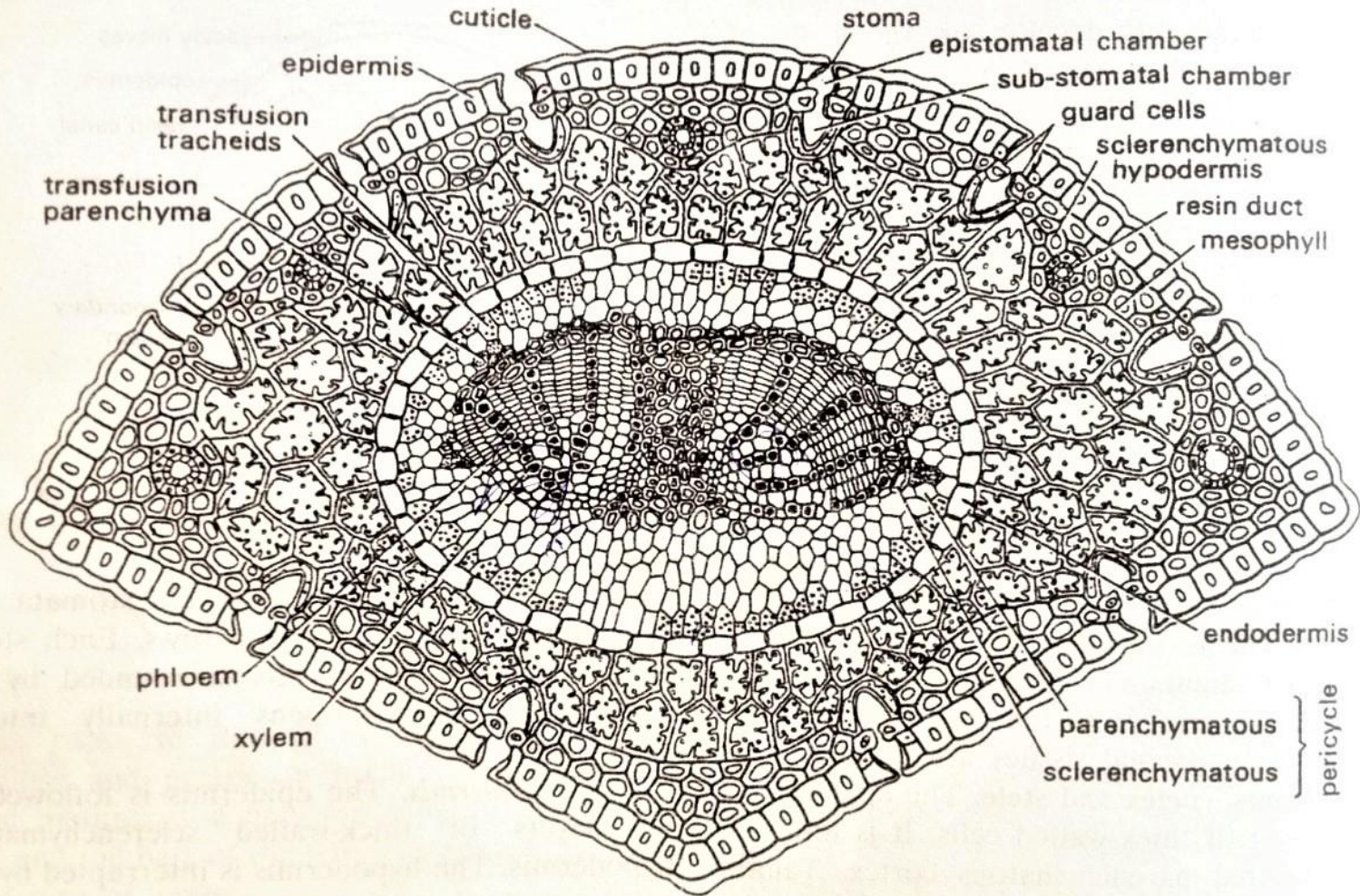


Fig. 13. *Pinus* : Transverse section of needle.



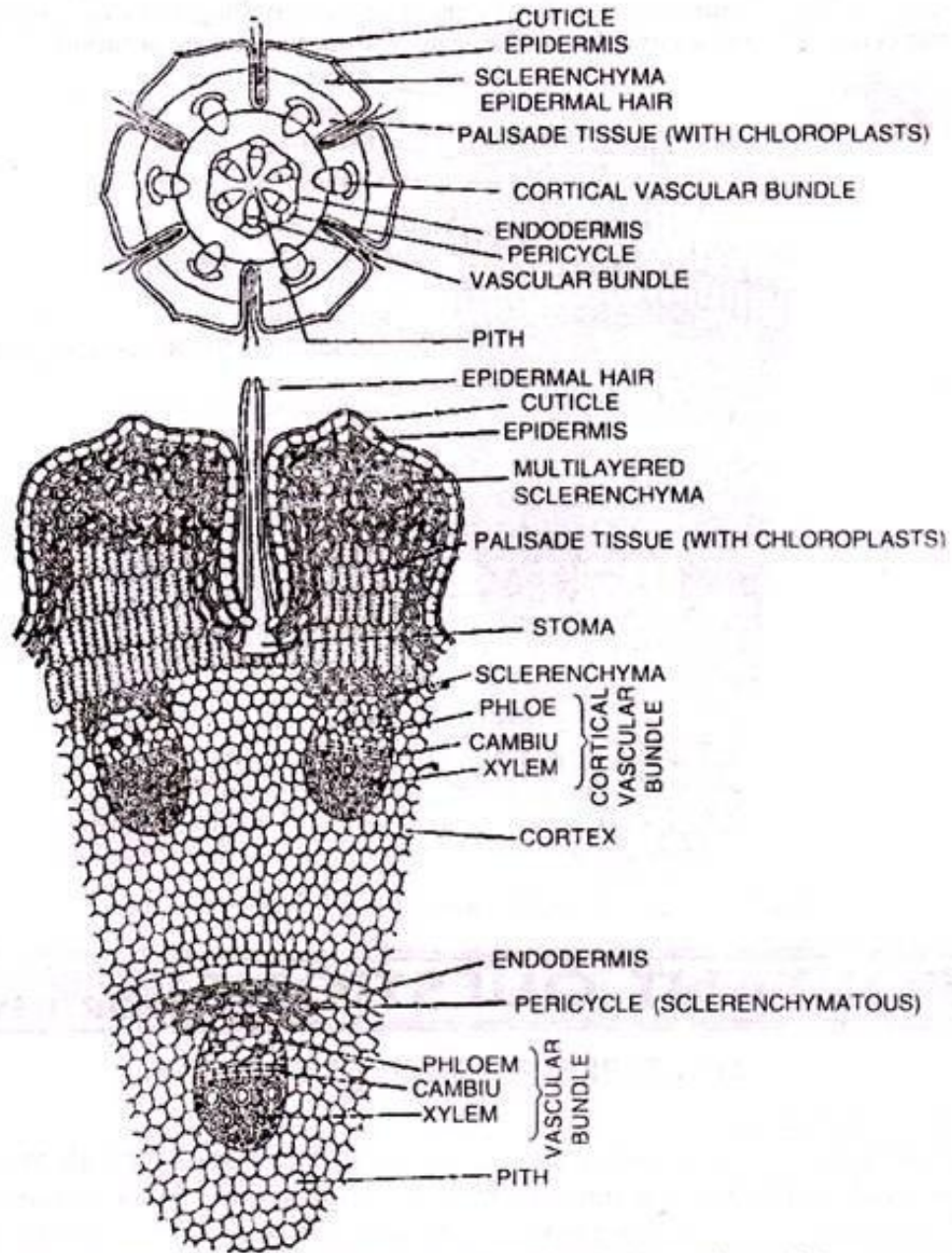


Fig. 2.21. T.S. stem of *Casuarina*. Upper: Diagrammatic sketch. Lower: A part of the same magnified

# CASUARINA STEM

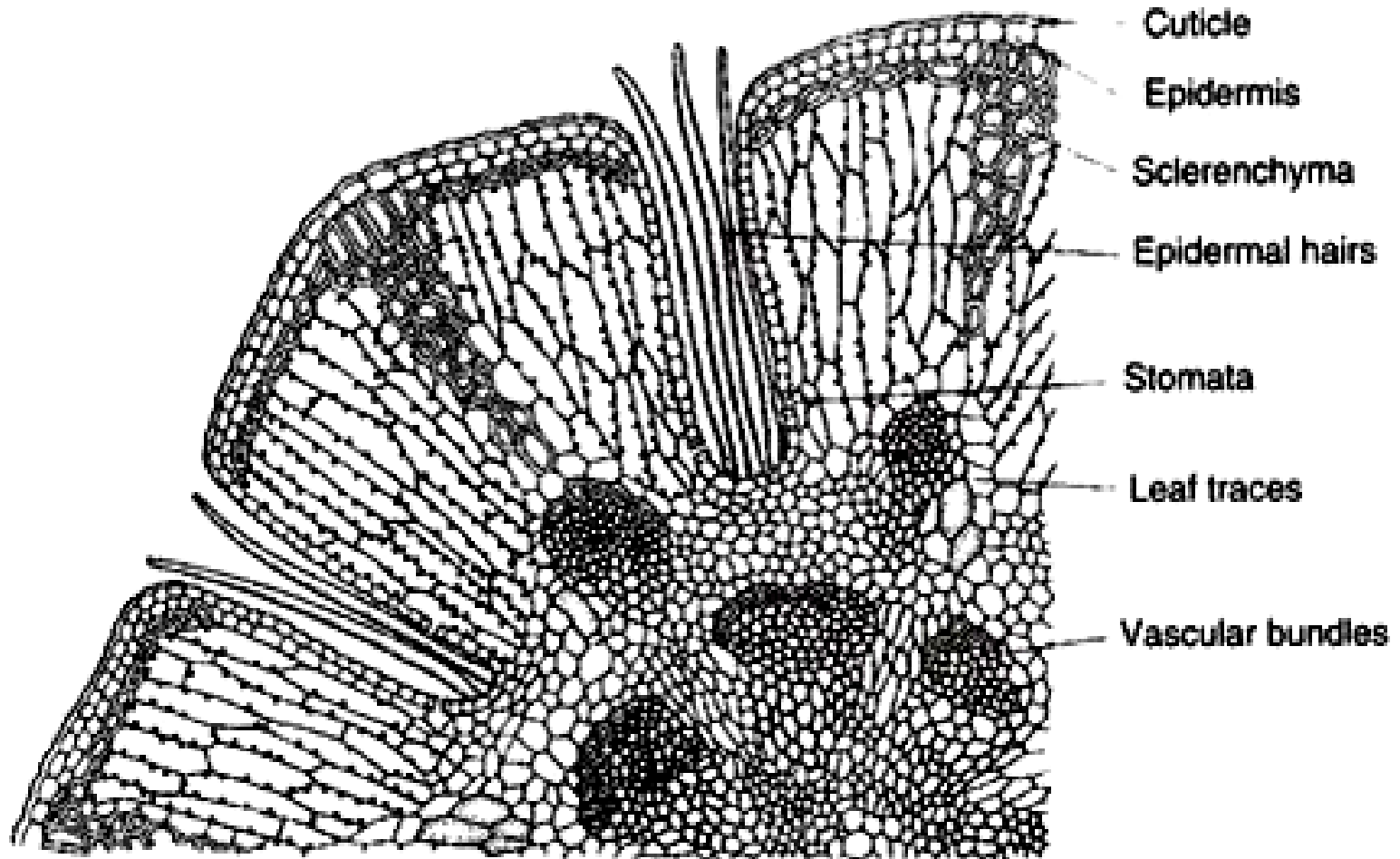


Fig. 8.30. T.S. of *Casuarina* stem.

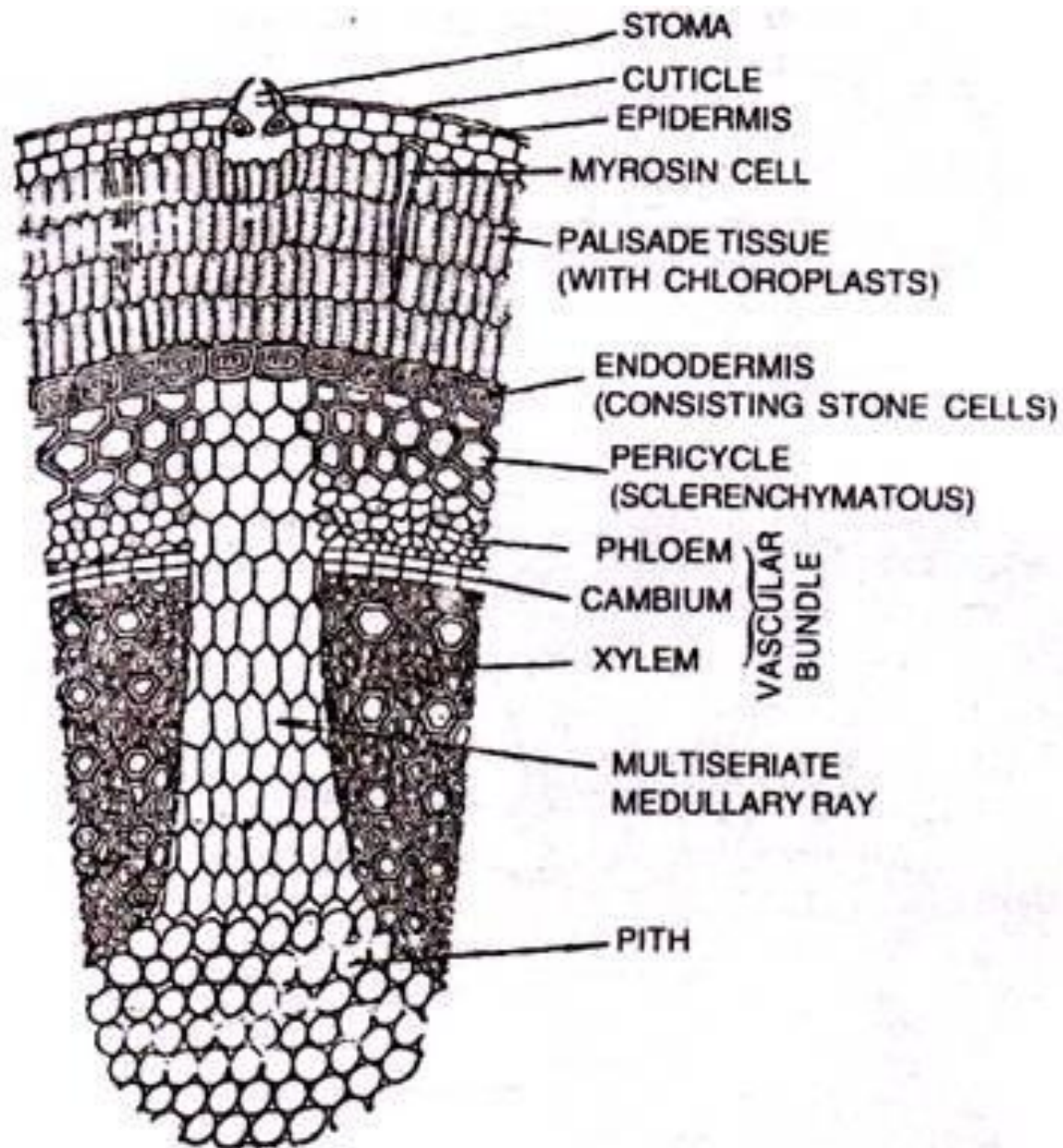
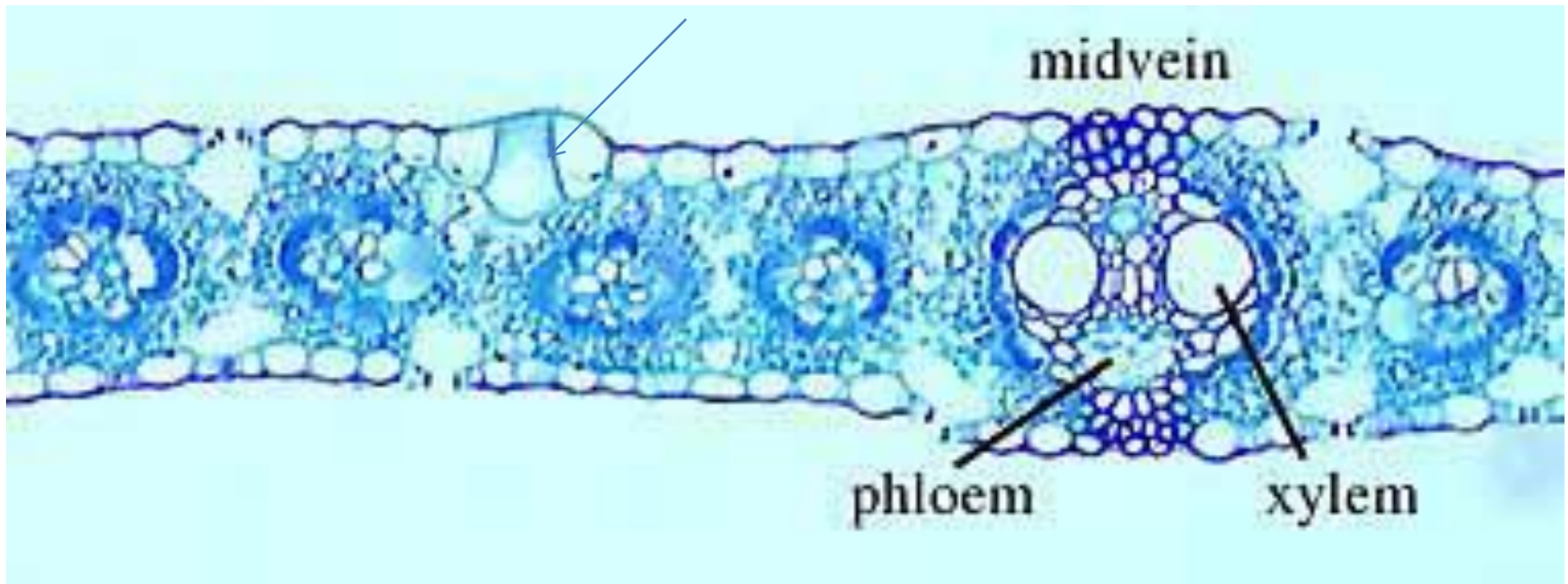


Fig. 2.23. A part of the T.S., stem of *Capparis aphylla* magnified.

# MONOCOT LEAF

BULLIFORM CELLS





# *Hydrilla* Stem (Hydrophyte)

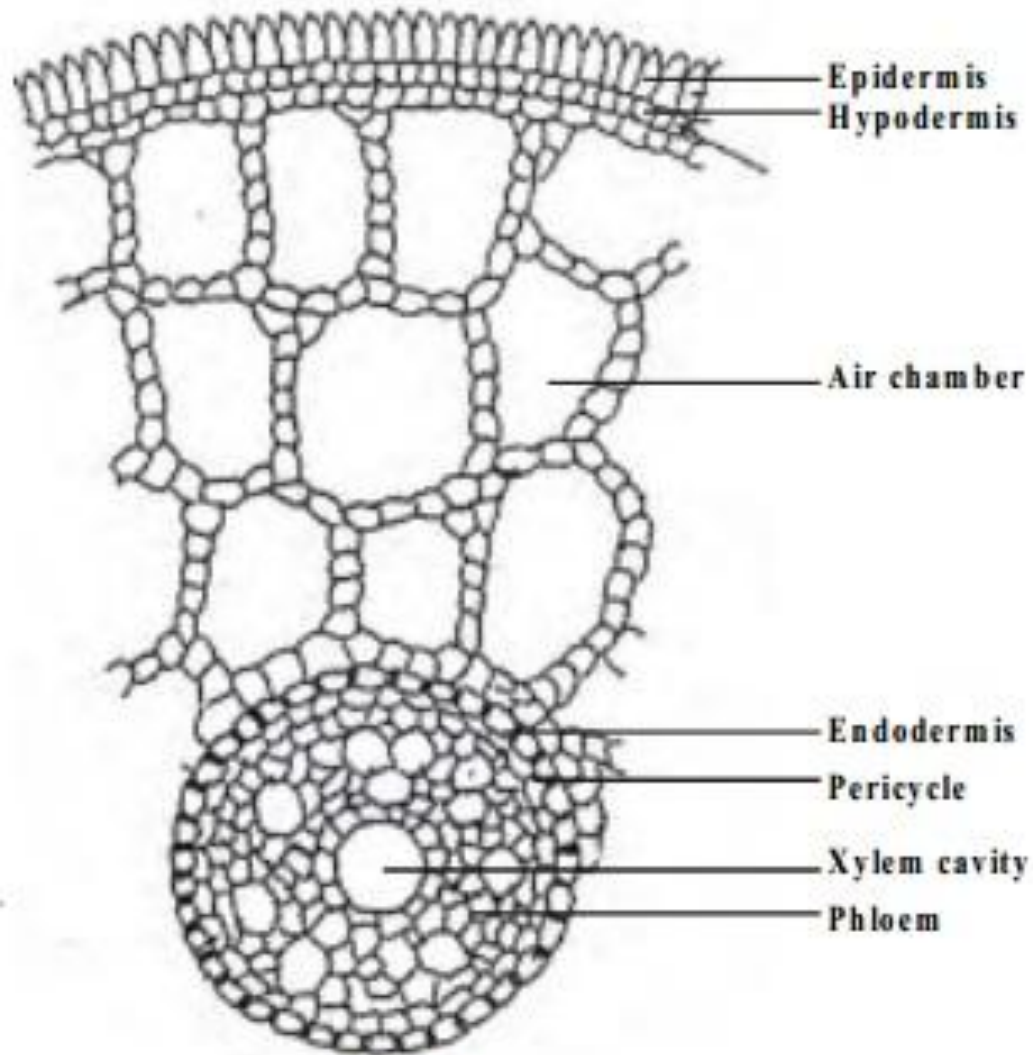


Fig : T.S. Hydrilla Stem

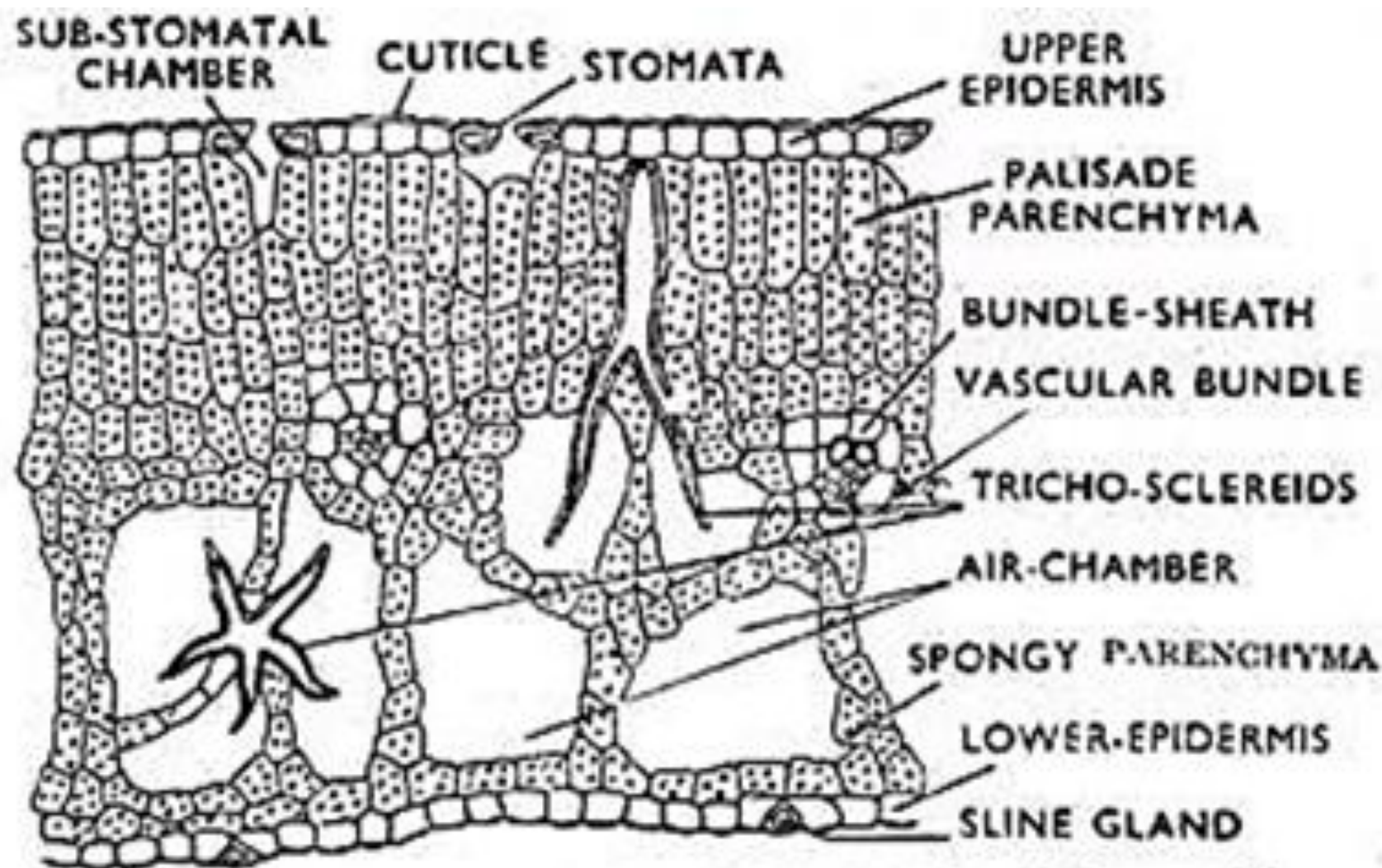


FIG. 772. Transverse section of a floating leaf of water-lily. Note larger air-chambers, mucilaginous glands and very much reduced vascular tissue.