

ROOM WISE CHART

S. No.	Room No.	Capacity (No. of Students)
1	3	65
2	5	50
3	6	55
4	7	65
5	8	70
6	9	70
7	10	50
8	11	50
9	12	50
10	13	45
11	102	65
12	106	42
13	107	70
14	108	70
15	109	70
16	110	70
17	111	65
18	201	40
19	202	45
20	203	65
21	204	22
22	205	42

23	206	42
24	207	65
25	208	65
26	209	65
27	210	65
28	211	45
29	212	45
30	213	50
31	301	45
32	302	45
33	LTR-1	40
34	LTR-2	40
35	LTR-3	20
36	LTR-4	20
37	LTR-5	50
38	LTR-6	50
39	LTR-7	50
40	LTR-8	20
41	Sports Room	20

LABORATORIES INFRASTRUCTURE

S. No.	Department	No. of Laboratories	Capacity (No. of Students)
1	Biochemistry	01 Main Lab	35-40
		01 Instrumentation Lab	
2	Botany	02 Main Labs	30 each
		01 Instrumentation Lab	30
3	Chemistry	02 Main Labs	48 each
		01 Instrumentation Lab	20
4	Computer	04 Labs	18, 24, 48 & 48
5	Geography	01	30-35
7	Physics	02 Main Labs with 01 dark room each	70 & 100
		01 Instrumentation Lab	20
8	Zoology	02	25 each
		01 Museum	25

LIBRARY INFRASTRUCTURE

SHIVAJI COLLEGE LIBRARY

Annual Report 2019-2020

S.No.	Particulars	Existing	Newly Added	Value
1	Total No. of Books (Print)	78358	2175	28,21,878
2	Total No. of E-Books	31,35,000 (CN-LIST)	—	5900 Subscription both e-book & Journal
3	Total No. of Braille Books	286	—	
4	Total No. of Title			
5	Total No. of Journal (Print)	04	03	
6	Total No. of E-Journal	6000 (CN-LIST)	—	5900 Subscription both e-book & Journal
7	Total No. of Magazines (Hindi)	08 Magazines (09 copies)	01	
8	Total No. of Magazines (English)	12 Magazines (13 copies)		
9	Total No. of Newspapers (Hindi)	05 Newspapers (11 copies)	—	
10	Total No. of Newspapers (English)	10 Newspapers (20 copies)	02 copies of The Hindu Newspaper	
11	Total No. of CDs/DVDs	619 + 103		
12	Total No. of Audio Players (I-Pod)	09	—	—
13	Total No. of Audio Players (Angel)	33	—	—

LIBRARIAN

SHIVAJI COLLEGE LIBRARY

For NAAC-SSR 2020

Date: 20.07.2020

Library infrastructure:

1. No. of barcoded books:

Library has available collection of 80533 Books as on 30.3.2020. All the books have Bar Code/RFID tags.

e-journals, e-resource portals:

- (a) <https://nlist.inflibnet.ac.in/>
- (b) www.du.ac.in

- 2. No. of CDS : 722
- iPODS, : 10
- Braille books : 286
- Recording devices : 29 Tape recorder
- 33 Angel (Talking Digital Portable Daisy Player)

Barcode Printers : 02

3. Administrative and library maintenance software like MATLAB, Tally, QGIS:

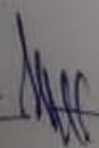
KOHA Library Management Software installed in 2019 before this Library was using NETTLIB software since 2009.

4. RFID Technology:

RFID technology implemented in 2019

5. Other VH-friendly facilities:

1. 286 Braille Books of various subjects are available in the Library.
2. 10 ((4 GB) I-Pod facility is available for students.
3. 29 Tape record and cassette facility is available for students.
4. 2 Braille kits for mathematics are available for visual impaired students.
5. One Lex Portable camera reading system (Lex Air) and a Notebook computer is available for students.
6. 33 Angel (Talking Digital Portable Daisy Player)
7. 33 Audio CDs for Blind Students.
8. 2 Computer System with INDO-NVDA (Screen Reading Software) is available for students.
9. Photocopy facility is available for students.
10. Internet facility is available for students and teachers.
11. Library Staff Mr Ravi Kumar, Professional Assistant and Mr Chandra Singh Meena are available to guide the students in locating the reading material.


(RAVI KUMAR)

INFRASTRUCTURE DETAILS OF JIJABAI ACADEMIC BLOCK



To whomsoever concern

We hereby certify, Jijabai Academic Block, new block of Shivaji College (University of Delhi), located at Rajauri Garden Ring Road, New Delhi - 110027 has a ground coverage of 1448.95 sq.m. The total open area provided is 7397.46 sq.m. Jijabai Block is designed in context with the existing building to ensure complete integration. The connecting corridor connects the new block with the existing block in all floors. The facilities include

- Multipurpose hall,
- Mini Auditorium,
- 2 Lecture theatre with multimedia facility,
- 12 Smart lecture halls,
- Botany lab,
- Bio-chemistry lab,
- Computer lab,
- Finance lab,
- Chemistry lab,
- Zoology lab,
- Staffroom,
- Toilets and lift.
- Parking

The building is designed with Differently-abled toilet and ramp making it differently-abled friendly. Complete fire safety has been taken into account. Rain water harvesting and STP has also been implemented in the design. The green pockets are provided to enhance the micro-climate and other energy conservation methods are incorporated making it a sustainable building.

Smita Datta Nakhija
ARCHITECT
Smita Datta Nakhija
CA/84/8440

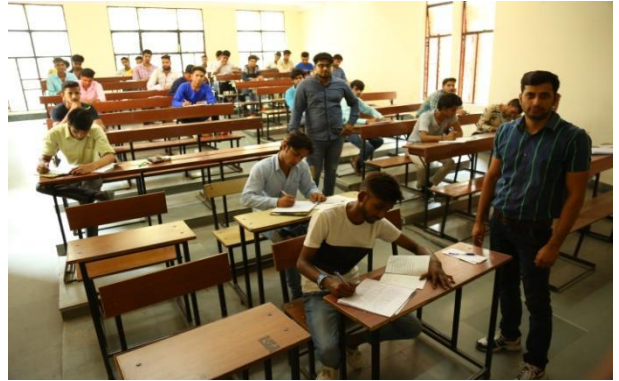
AVESANA
7459/8-10, Vasant Kunj
New Delhi-110070

ARCHITECTURE & ENVIRONMENTAL DESIGN CONSULTANCY

7459 & 7464, B-10 VASANT KUNJ, NEW DELHI-110070 TEL: +91(0)11-26897558, 26890569

PICTURES OF INFRASTRUCTURE

Classrooms



All labs

Biochemistry Lab



Main Lab



Instrumentation Lab

Botany Lab



Main Lab



Instrumentation Lab

Chemistry Lab



Main Lab

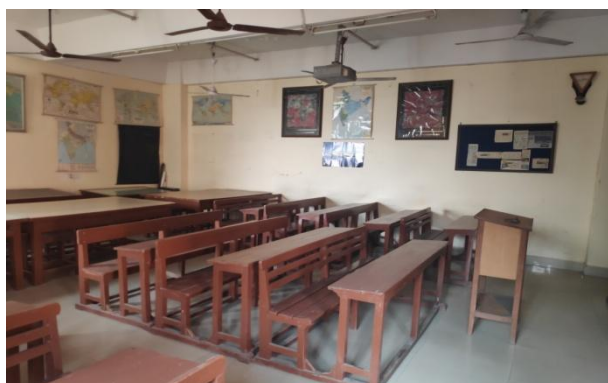


Main Lab

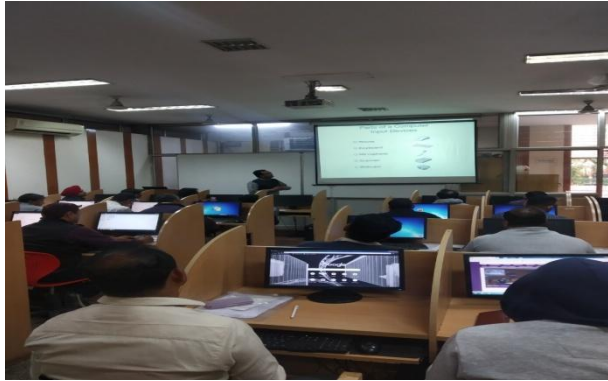


Instrumentation Lab

Geography Lab



Computer Lab



Computer Lab with projector



Computer Lab with projector & smart board

Physics Lab



Main Lab



Dark room



Instrumentation Lab

Zoology Lab



Main Lab



Main Lab



Museum

Principal's Office



Front of Principal's Office with smart Notice Board

Staff Room



Main Common Staff Room

Staff Committee Room



Bank



Reading Room

Committee Room



Ramp for differently-abled students



Auditorium



Main Stage



Seating arrangement

Library



Reading Halls for students



Reading hall with computers for faculty



RFID gate at the entrance

Photocopy Shop



Canteen



Bru and Mother Dairy



Jijabai Academic Block



Main Entrance



Inauguration of the Jijabai Block

Vertical view of the building



Seminar hall on the first floor

